

NeXtage 08 - 4K - Ref. NXT0802-4K

Powerful true-Seamless AV processor based on **Analog Way's LiveCore™** platform, state-of-the-art processing, Soft Edge Blend and 4K capabilities for top-notch presentations



INPUTS



OUTPUTS



FEATURES



NeXtage 08 - 4K at a glance

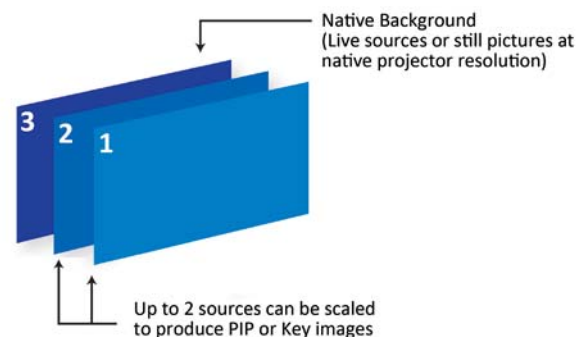
- ▶ 8 Seamless inputs and 28 input plugs (incl. 2 x 4K HDMI plugs)
- ▶ Input format up to 4K 30Hz 4:4:4
- ▶ Output format up to 4K 30Hz 4:4:4
- ▶ Independent Preview/Mosaic/Monitoring output
- ▶ Full live Preview of all sources (Preview/Mosaic/Monitoring)
- ▶ Customization of monitoring layouts (up to 8 templates stored)
- ▶ 2 true-Seamless scaled layers + 1 native background layer
- ▶ Advanced Layer Management
- ▶ Rotation capability in output (step by 90 degrees)
- ▶ Outstanding visual effects (Flying, Cut and Fill...)
- ▶ Communicative architecture
- ▶ Ruggedized and heavy-duty design
- ▶ Associative Modularity
- ▶ User-friendly and intuitive Graphic Interface
- ▶ Remote Services
- ▶ Swappable power supply

Option

- ▶ 500156: Extension Warranty 2 years (5 years total)
- ▶ SPU001: Secure Power Unit

To Control NeXtage 08 - 4K

- ▶ Web-based Remote Control Software (Web RCS)
- ▶ VRC300: Vertige™
- ▶ SB80-2: Shot Box²
- ▶ SB124T-2: Control Box²
- ▶ AMX and Crestron's drivers*



Up to 2 independent true-Seamless scaled layers are available per screen, offering the capability to control each layer individually in time and transition.

*Available on www.analogway.com



Key features

▶ 8 Seamless inputs and 28 input plugs

- 4 x HDMI (incl. 2 HDMI 4K 30Hz)
- 6 x DVI-I (2 DVI Dual Link included)
- 2 x DisplayPort (4-Lanes)
- 8 x 3G/HD/SD-SDI
- 8 x Universal Analog (4x HD15 & 4xDVI-A)

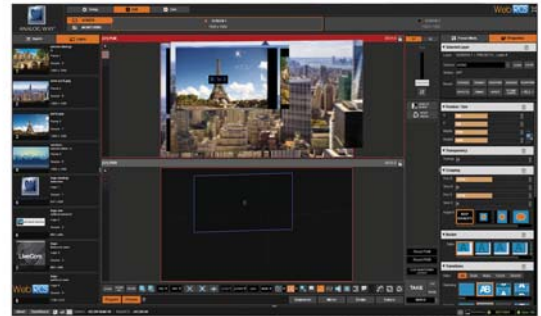
▶ 2 outputs with 5 output plugs

- Universal Analog (HD15 & DVI-A)
- DVI-I (DVI Dual Link available on output #1 HDMI 4K available on output #2 through DVI connector)
- 3G/HD/SD-SDI
- Video Optical SFP module cage

▶ Features & Effects

- Up to 2 true-Seamless scaled layers per screen
- Independent Native Background
- 100 memories for logos and frames
- 144 presets memories and 144 master presets memories
- Frames and Logos: fully resizable
- True A/B mix
- Output capability up to 2560x1600 and 4K
- 4-Customizable display layouts: Full Preview, Live Mosaic, Monitoring and Recording
- Display configurations: Mixer, Hybrid, Hard Edge & embedded Soft Edge
- Associative modularity: up to 4 units linked together using **Vertige™** console
- Luma/Chroma Key/DSK
- Layer border: Edge/Smooth/Shadow/Smooth Edge (Edge: color/width/height)
- New tools box for layers: Transitions, Effects, Speed, Timing, Faders, Strobe, Mirror,...
- Numerous effects: Cut, Dissolve, Slide, Wipe, Stretch, Circle, Depth, Flip, Flying Curve, Background Cut, Transparency, Luma/Chroma Key, DSK, Cut and Fill
- Web-based Remote Control Software for multiple users: **Web RCS**
- Remote Tools
- Remote Services

Web RCS

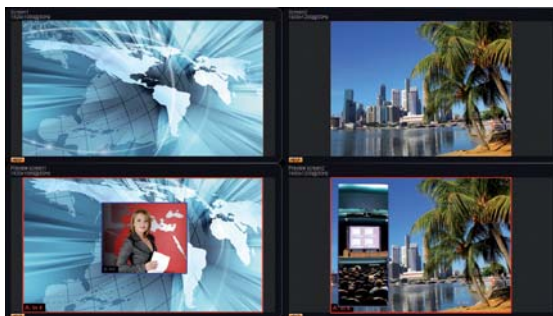


- The **Web RCS** offers a user-friendly graphic interface consisting of 3 independent sections: Setup, Edit and Live. A Preconfig. mode indicates how to easily configure the device step by step.
- With dynamic snapshots of the connected sources available in the interface, the intuitive dashboard allows operators to fully prepare their shows and control them live during their events.
- An innovative Sequences mode allows easy organization of presets through drag and drop.

In addition to its two main outputs, **NeXtage 08 - 4K** features an independent Dual-Link output for monitoring purposes.

This specific output offers versatile display options, ensuring safe monitoring and flawless show control. All images are live and can be labelled through Web Remote Control Software. Additional information on each source is also available directly on the different live pictures.

Full Preview



Live Mosaic



Dimensions:

- ▶ D 21.41" x W 17.32" x H 5.23" ("Rack ears" not included)
- ▶ D 544 mm x W 440 mm x H 133 mm ("Rack ears" not included)

Weight:

- ▶ 14,8 kg
- ▶ 32,63lbs

Power Supply:

Swappable power unit; 100-240 VAC; 4,8A; 50/60Hz; 225W

Supplied with:

- ▶ 1 x Power supply cord
- ▶ 1 x Ethernet cross cable (for device control)
- ▶ 1 x MCO 10 pin connector
- ▶ 1 x Web-based Remote Control Software included and hosted on the device
- ▶ 1 x Rack mount kit (front ears and rear support)
- ▶ 1 x User Manual (PDF version)*
- ▶ 1 x Quick Start Guide*

Warranty:

3-year warranty on parts and labor back to factory.



* All User Manuals and Quick Start Guides are also available on www.analogway.com

ⓘ Specifications subject to change without prior notice

All technical specifications are available on our website